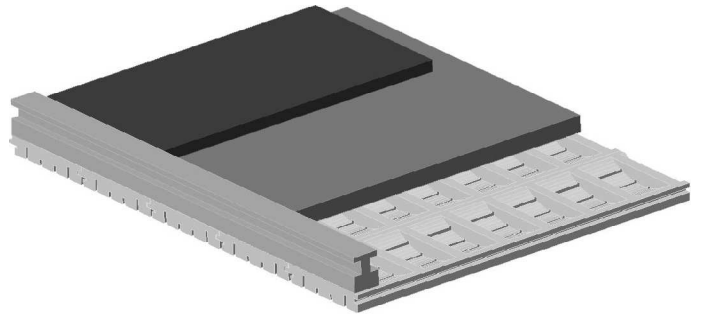
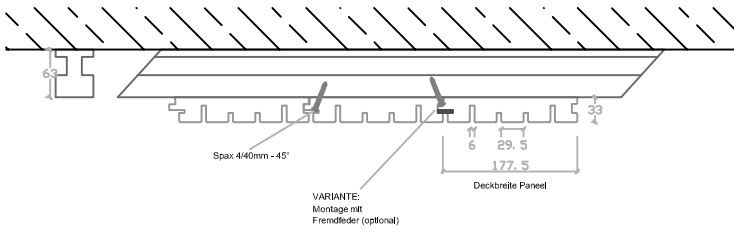
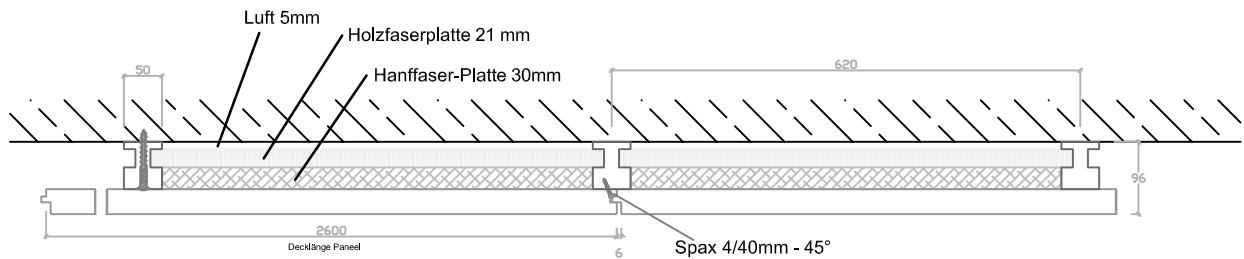


lenofon ecologic deluxe - Planungsdaten

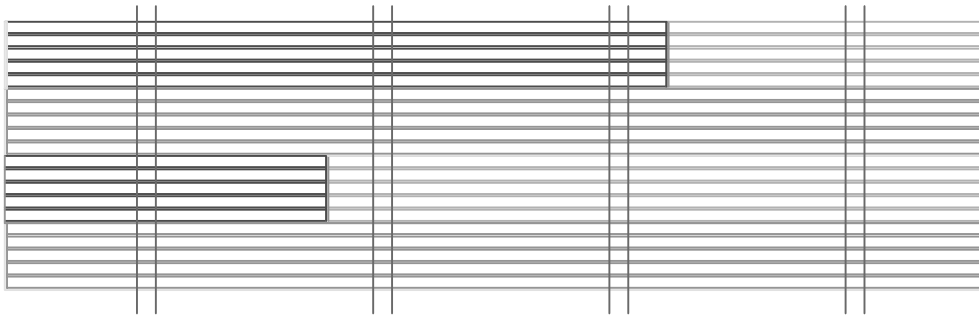
Detail Deckenmontage Querschnitt (ohne/mit Fremdfeder) [M 1:10]



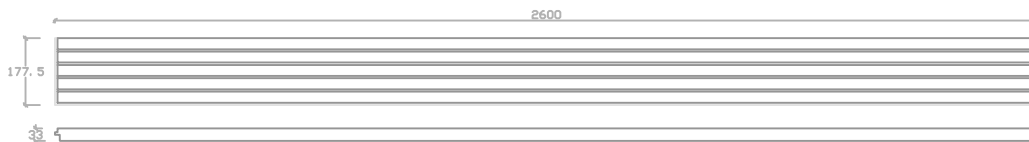
Detail Deckenmontage Längsschnitt [M 1:10]



Beispiel Verlegemuster Längenoptimierung (Läuferverbund) - [M 1:20]



Planungsblock - Paneel [M 1:20]



lenofon®

LENOFON by Holteq GmbH&Srl
 Eggenital 20a - Val d' Ego 20a
 39050 Deutschnofen / Nova Ponente (BZ) || ITALY
 TEL: +39 (0471) 610062 FAX: +39 (0471) 610577
 http://www.lenofon.com e-mail: info@lenofon.com

A TERMINI DI LEGGE SI RISERVA LA PROPRIETA' DI QUESTO DISEGNO CON DIVIETO DI RIPRODURRE O RENDERSILO COMUNQUE NOTO A TERZI SENZA AUTORIZZAZIONE SCRITTA.
 DISEGNO DS

AUFTRAGGEBER / COMMITTENTE

COM1

BESCHREIBUNG / DESCRIZIONE

DEX2

DATUM / DATA

DT

AKTUALISIERT / AGGIORNATO

AG

ZECHNER / DISEGNATORE

DIS

MASSSTAB / SCALA

SC

CODEX / CODICE

ND